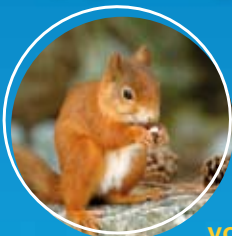


Red Squirrel Trust



The Red Squirrel Trust, in conjunction with the Wight Squirrel Project, is a registered voluntary organisation. Their aim is to educate, protect and promote Red Squirrels and their habitat. The Trust relies on donations, sponsorship, fund-raising, volunteers and help from the public.

How can you help?

You can help protect the Isle of Wight Red Squirrels in a number of ways. Contact the Trust to find out more about making a donation, joining the Bushy Tails Club or adopting one of our furry little friends. You can also make a donation when you book your ferry travel with Red Funnel.

The Bushy Tails Club

Kids, the great thing about the Bushy Tails Club is - adults can't join! You'll receive: a story book, a badge, a newsletter, free admission to one event and half price entry to all other events.

Adopt a Red Squirrel

An ideal gift for family, friends or even yourself. Donate a minimum of £10 and you'll receive a copy of 'Red Squirrels' by Helen Butler, a picture of your Squirrel and an adoption certificate. There are four adorable Squirrels to choose from: Lucky, Ginger, Rusty and Tufty.



For more details contact:

The Red Squirrel Trust,
PO Box 33, Nicholson Road,
Ryde, Isle of Wight, PO33 1BH.
Tel: 01983 611003
Email: wightsquirrels@hotmail.com
Registered Charity No. 1112374

Nutty Squirrel Facts

- 👉 Squirrels do not hibernate
- 👉 Red and Grey Squirrels cannot breed together
- 👉 Reds cannot digest tannins in acorns - Greys can
- 👉 Young Squirrels are called kittens
- 👉 Females can have 2 litters of 3-4 Squirrels per year
- 👉 Kittens are born without hair or teeth and are blind for the first 3-4 weeks
- 👉 Only around 1 in 6 Squirrels see their first birthday
- 👉 Adult Red Squirrels are 20-22cm long, weigh 275-300 grams and have a tail length of 17-18cm
- 👉 Like us, they are right or left handed
- 👉 Squirrels can live up to 6 years in the wild
- 👉 It takes a Dormouse 20 minutes to open a hazelnut and a Red Squirrel just 22 seconds
- 👉 Squirrels are good swimmers

How to get there

Red Funnel operates Vehicle Ferries and a fast, frequent Red Jet Hi-Speed foot passenger service between Southampton and the Isle of Wight. Our Vehicle Ferries offer an extensive range of food and drink options, easy access and superb views across the Solent; so you can simply relax and unwind.

The Red Jet service speeds across in just 23 minutes and is timed to meet trains from London Waterloo, making it ideal for both business and leisure travel.

www.redfunnel.co.uk



This leaflet has been printed on ERA gloss art which is Forest Stewardship Council Certified and manufactured from 50% recycled fibre, 50% FSC certified virgin fibre.

Southampton Isle of Wight & South of England Royal Mail Steam Packet Company Ltd. Registered in England No.2404. Registered office: 12 Bugle Street, Southampton, SO14 2JY. Terms and conditions of carriage apply to all Red Funnel and Red Jet services. For further information check our website or call 0844 844 9988 for details.

LA9346 09/08



The Isle of ~~Wight~~ Red Squirrels



In partnership with the Red Squirrel Trust and the Wight Squirrel Project



RED FUNNEL
NUTS about the Isle of Wight

The Isle of Wight - Home of Red Squirrels



The Isle of Wight is one of the few places in the UK where Red Squirrels still thrive. The Island's stunning landscape provides the ideal habitat for Red Squirrels and also makes the Island a much loved destination for hundreds of thousands of visitors.

The Solent, the stretch of water that separates the Isle of Wight from the mainland, helps to keep out pesky Grey Squirrels. Greys not only outcompete Reds, but also carry the deadly Squirrelpox virus which is fatal to the Reds.

So, keep your eyes peeled for Greys, and remember to check the boot of your car before you catch the ferry. After all, if you're caught bringing a Grey Squirrel to the Island, you might end up in prison for two years, or a £5000 fine. And trust us, those Grey Squirrels will try anything to get in.

To find out more visit www.redfunnel.co.uk/redsqurrel

Chris Packham – TV presenter, photographer and author, supports Red Squirrels on the Island.



"As a local lad from Southampton, the importance of the Isle of Wight as a refuge for the Red Squirrel has always been very close to my heart and I am therefore very keen to work with Red Funnel, The Red Squirrel Trust and the Wight Squirrel Project to help raise awareness and aid its conservation.

As the introduced Grey Squirrel continues to spread through British woodlands, the future is far from secure for our native Red Squirrel.

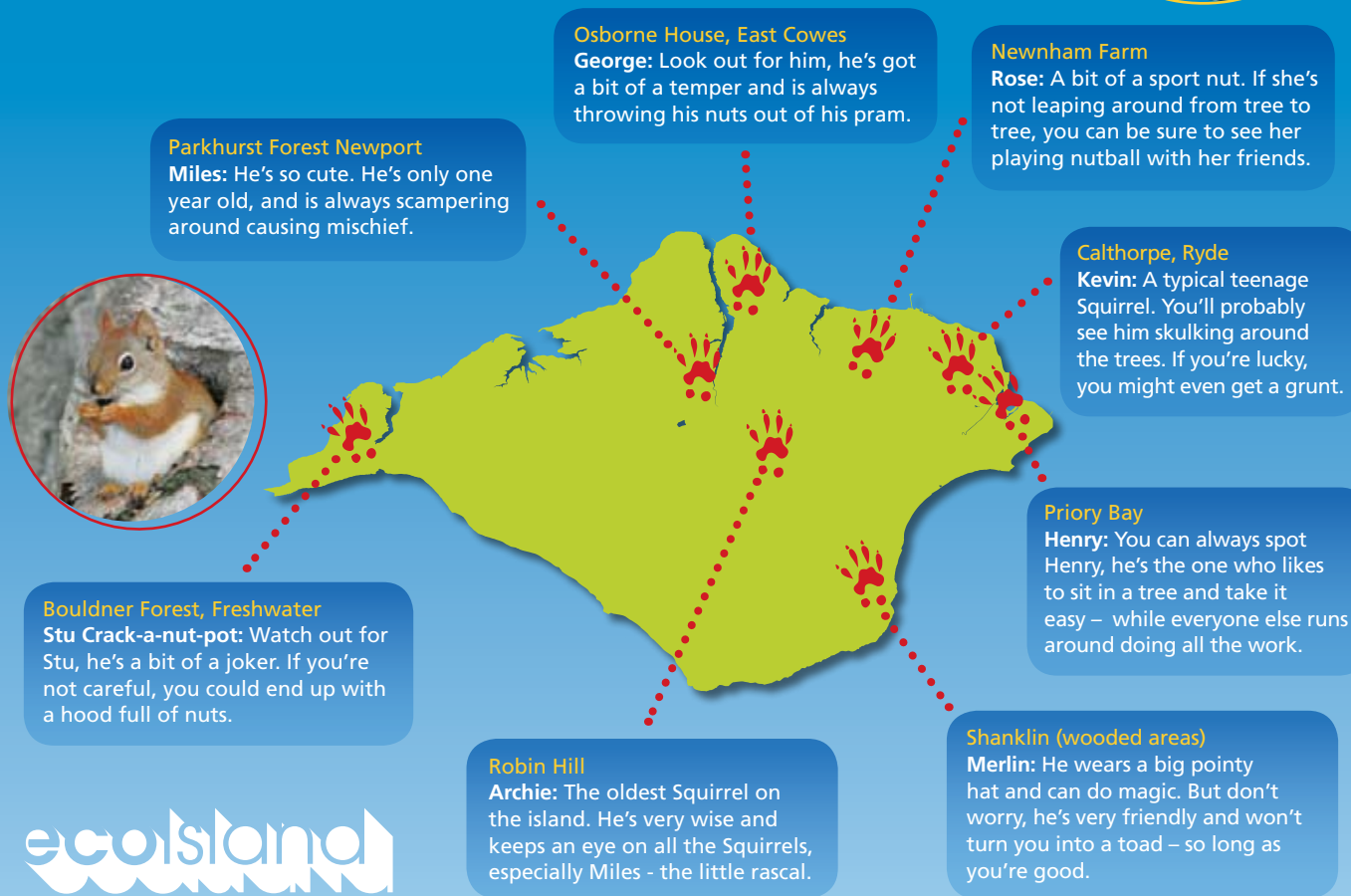
We therefore all need to work together to preserve the Isle of Wight as a Grey Squirrel-free zone and help protect the 3,500 beautiful Red Squirrels that inhabit the Island.

It really is a case of – Your Squirrels Need You!"

The Isle of Wight Red Hot Spots



You can see Red Squirrels anywhere on the Island. But this map shows some of the Red Hot Spots. If you're lucky, you might even see some of the famous Squirrel characters that live there.



The Isle of Wight aims to have the lowest carbon footprint in England by 2020, so why not explore the Island without a car? There's an excellent bus service and cycle network offering easy and enjoyable ways to visit the Squirrels. Plus you can buy discounted bus tickets in advance from Red Funnel.

To see the Red Squirrels for yourself, get in touch with Red Funnel. Call 0844 844 9988 or visit www.redfunnel.co.uk